



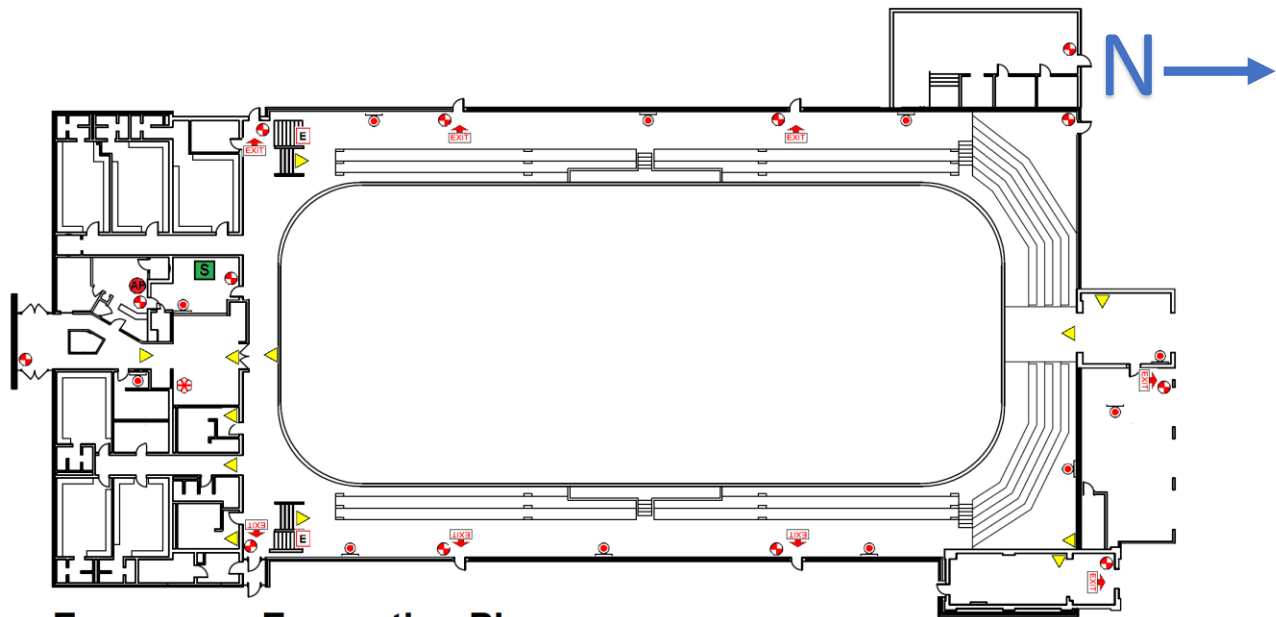
# Wallaceburg Minor Lacrosse Association Emergency Action Plan

The coach, manager and safety person should initiate a meeting at the beginning of the season to ensure they have the volunteers required for their Emergency Action Plan.

## EMERGENCY PHONE #

911

Wallaceburg Memorial Arena  
600 Wall Street  
Wallaceburg, ON  
N8A 3H9  
(519) 627-1607



**Emergency Evacuation Plan**  
Wallaceburg Memorial Arena  
First Floor

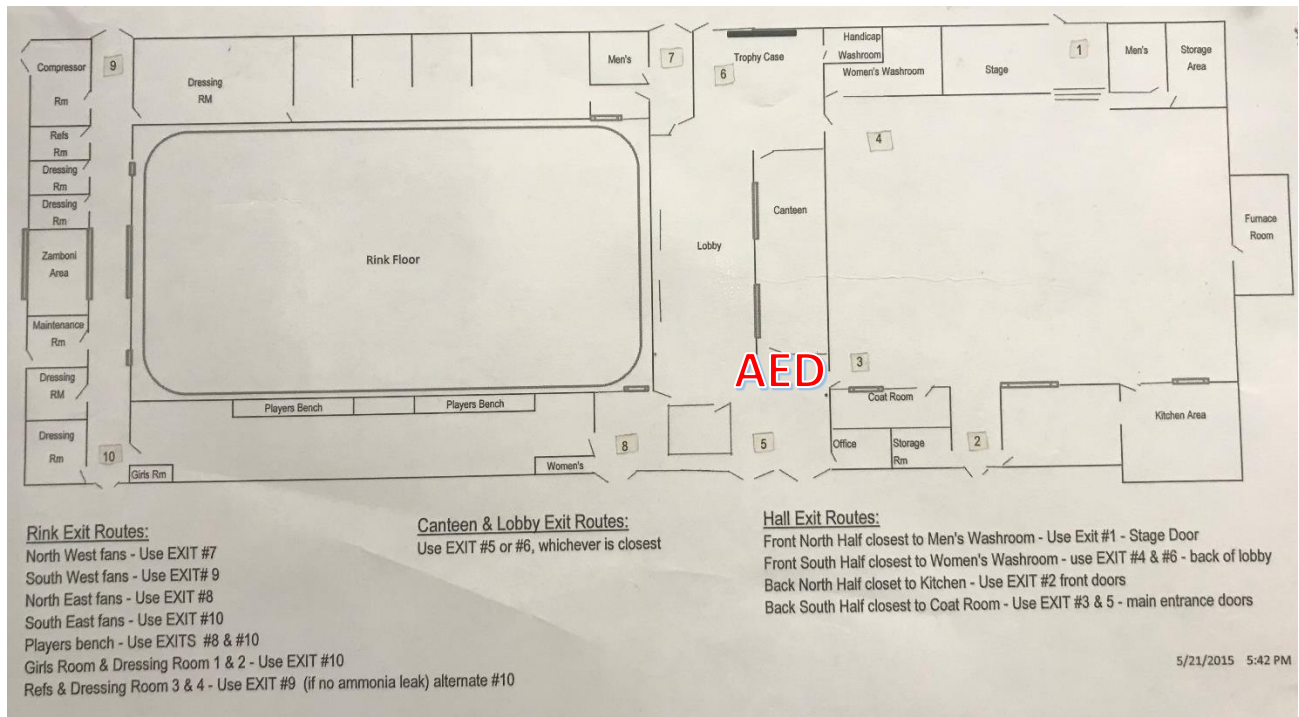
Legend:	
	Fire Extinguisher
	AED
	First Aid Station
	Suppression System
	Fire Alarm Pull Box
	Annunciator Panel
	Emergency Exit
	Fire Hydrant
	Emergency Light
	Exit Sign

Teams need to decide in their meeting at the beginning of the season to ensure they have the volunteers required for their Emergency Action Plan.

## EMERGENCY PHONE #

911

**Walpole Island Sports Complex**  
770 Tecumseh Rd  
Walpole Island  
N8A 4K9

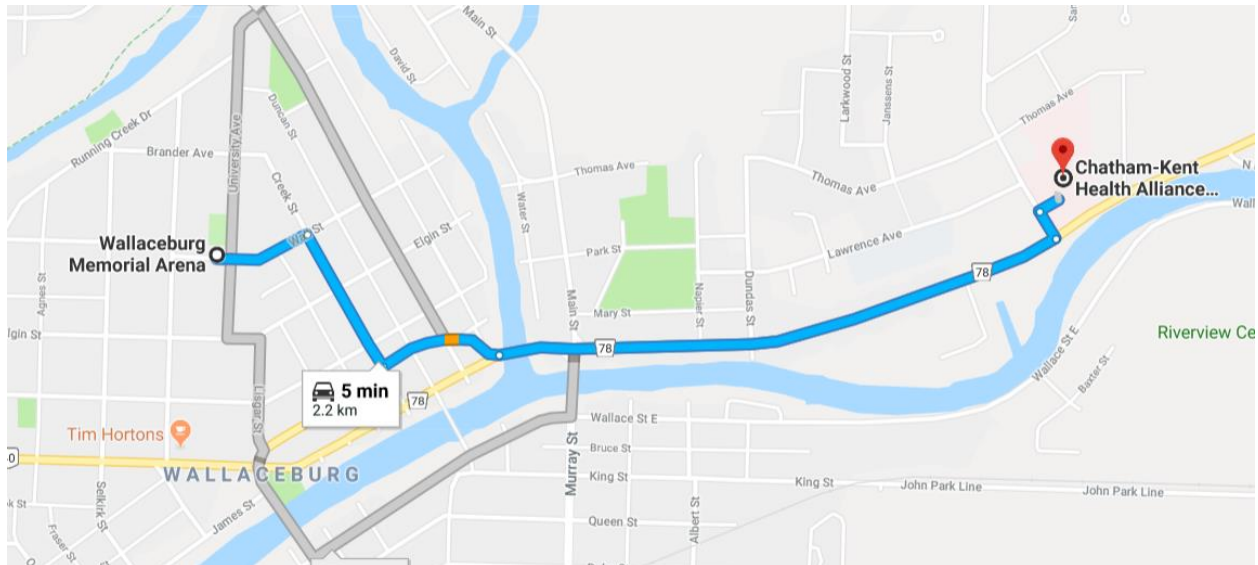


---

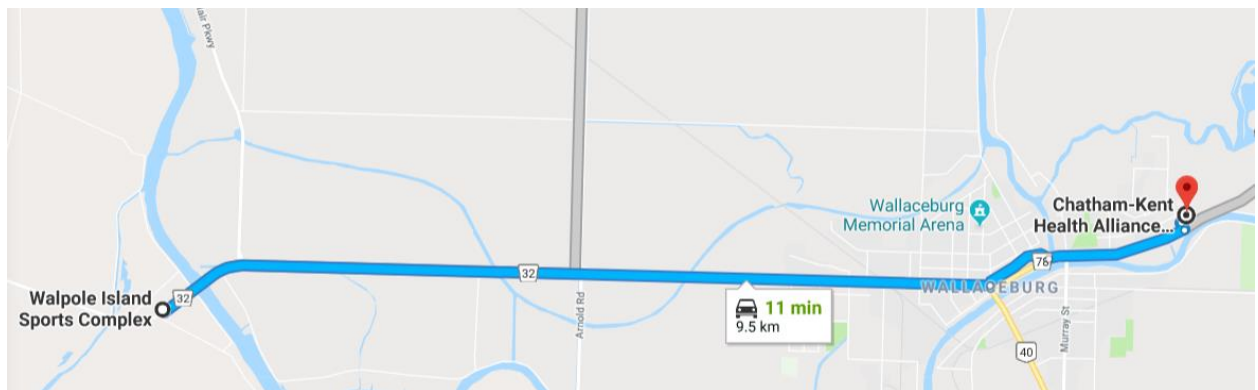
## Hospital:

**Chatham-Kent Health Alliance; Sydenham Campus**  
**325 Margaret Ave, Wallaceburg, ON N8A 2A7**  
**(519) 352-6400**

## Directions from Wallaceburg Memorial Arena



## Directions from Walpole Arena



# SAFETY REQUIRES TEAMWORK

## AN EMERGENCY ACTION PLAN FOR LAX

The coach, manager and safety person should initiate a meeting at the beginning of the season to ensure they have the volunteers required for their Emergency Action Plan.

### Equipment Locations

**Please locate and identify area on map:**

#### Legend

Phone ..... P  
Exits ..... E  
First aid... FA  
AED. .... AED

### Arena Information

Arena/Facility Name: \_\_\_\_\_

Address: \_\_\_\_\_

Telephone Number: \_\_\_\_\_

### Emergency Telephone Numbers

Emergency: \_\_\_\_\_

Ambulance: \_\_\_\_\_

Fire Dept: \_\_\_\_\_

Hospital: \_\_\_\_\_

Police: \_\_\_\_\_

General: \_\_\_\_\_

## Roles

### Safety Person / Charge Person

- Initially takes control of the situation.
- Instructs player to lay still and bystanders, such as other players, not to move player.
- Do not move the athlete.
- Assess injury status of player, decide if an ambulance/medical care is required.
- If the injury is serious and warrants immediate attention that you are not qualified to provide, make your pre-determined signal to your call person, control person and your pre-determined first aid/medical person.

### Call Person

- Makes call when emergency assistance required (tests their cell phone in the facility to ensure it will work).
- Know location of alternate phones in the facility being played in. Have change or a phone card if necessary.
- Ideally at all games and practices and not involved on the bench.
- Has a list of emergency phone numbers in the area of the facility.
- Has a diagram displaying specific directions and best route to the arena facility.

### Control Person

- Pre-determine the location of the AED and other emergency equipment in the facility.
- Retrieving the AED and/or first aid kit and bringing to the injured player if requested.
- Seek highly-trained medical personnel in the facility if requested by the Charge Person.
- Ensure teammates, other participants and spectators are not in the way of the charge person.
- Advise opponents, on-ice officials, arena staff and parents of the steps being taken.
- Ensure the quickest and best route for the ambulance crew to the ice surface is clear and accessible.
- Meet the ambulance on its arrival and direct EMS to the injured player.

## IMPORTANT REMINDERS

The game official continues to assume the role of being in charge of the overall environment.

It is important for officials to note that if the safety person makes the signal for assistance that there may be a number of pre-determined people who will respond and will require access to the ice.

Once the ambulance is called, the officials should send both teams to their dressing rooms.

*See flow chart on reverse*

# Emergency Action Plan Flow Chart

